



GET JAZZED!
More scores like this
at www.jameskass.com

TREE TUNE

COMPOSED BY JAMES KASS

Difficulty Level: Medium (3.5)
Includes *Groove Practice* band exercise,
Jazz Scales and *Jazz Licks* for soloists.

INSTRUMENTATION

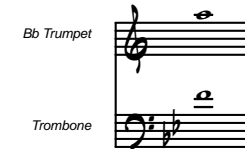
Alto Sax 1
Alto Sax 2
Tenor Sax 1
Tenor Sax 2 (optional)
Baritone Sax (optional)
Trumpet 1
Trumpet 2
Trumpet 3 (optional)

Trombone 1
Trombone 2 (optional)
Trombone 3 (optional)
Guitar (optional)
Piano
Bass (optional)
Drums

SOLOS

Alto Sax 1 (written, with chords)
Optional chord changes for
other instruments

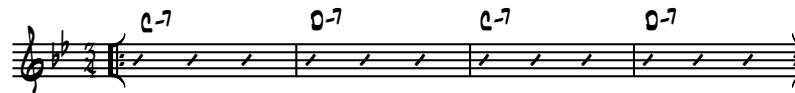
BRASS HIGH RANGE



SOLO CHANGES

Concert Key

JAZZ WALTZ $\text{♩} = 160$



DIRECTOR NOTES

Tree Tune is a jazz waltz, up-tempo but with a laid back feel. Instructive recordings for student listening would include Bill Evan's *Waltz for Debby* and even Dave Brubeck's *Take Five* (though technically not a waltz, being in 5/4). The *Groove Practice* exercise should be copied for all band members and practiced as a warm-up or until the proper feel is locked in.

ENSEMBLE: Trumpet 1 and Alto Sax 1 play the melody in unison at **A**. The articulation used should be legato and relaxed here. You may want to have the students experiment with different types of phrasing: tonguing the first of every two- or four-note group and slurring the others. When the ensemble background figures enter before **B**, they should not overpower the melody line. Emphasize the crescendo/descendo in the two bars before **C**. At **C**, the saxes take over the melody and the brass play a counterpoint line underneath them.

Point out to the rhythm section that the chords change slightly in bars 43-44. Emphasize the articulation in the brass in ms. 51-52. After the solos, the ensemble plays some more counterpoint at **D** before the *shout chorus* at **E**. The *fall-offs* (glissandos) in ms. 67, 121 and 123 may be omitted if they are too difficult for the horns to play cleanly at this tempo. The piece gradually subsides with each section playing the main theme softer and softer. Note the ritardando in the last three measures.

SOLOS: Alto Sax 1 has the first solo, eight bars before **F**. Cue the background figures as needed at **F**. Copy the included *Jazz Scales* for each soloist. Although two different minor scales are provided, some soloists may prefer the sound of playing just the **C-7** scale over both chord changes. To give students some soloing ideas, you can assign licks to students to memorize and include in their solos from the *Jazz Licks* sheet.

You may make a duplicate copy of this music for backup purposes, but only for the original band or school for which it was purchased. Distributing copies of this music to parties other than the purchaser denies compensation to the artist(s) and discourages the development of more music.